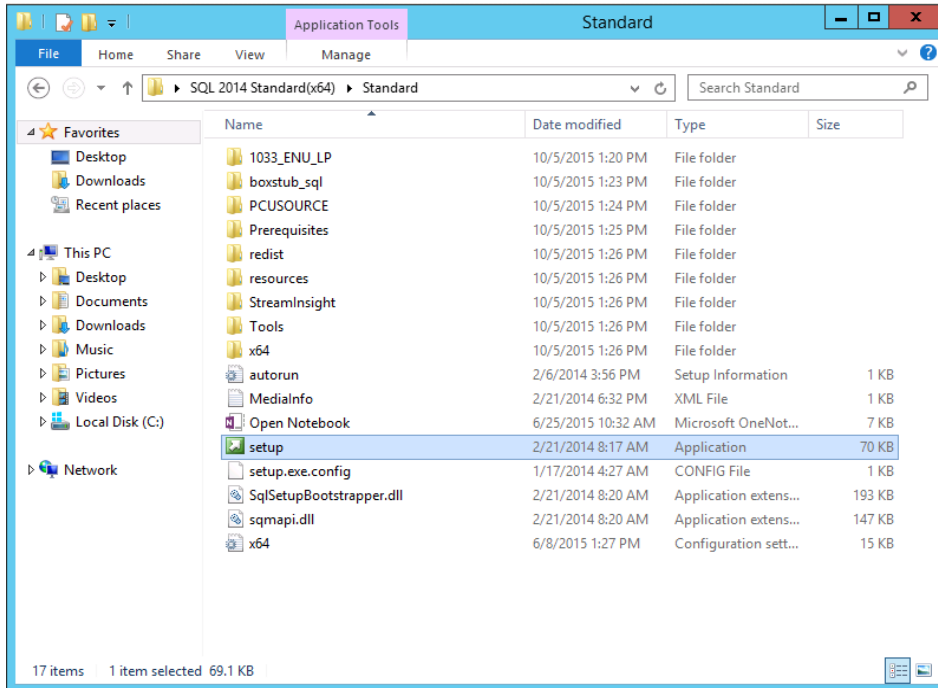
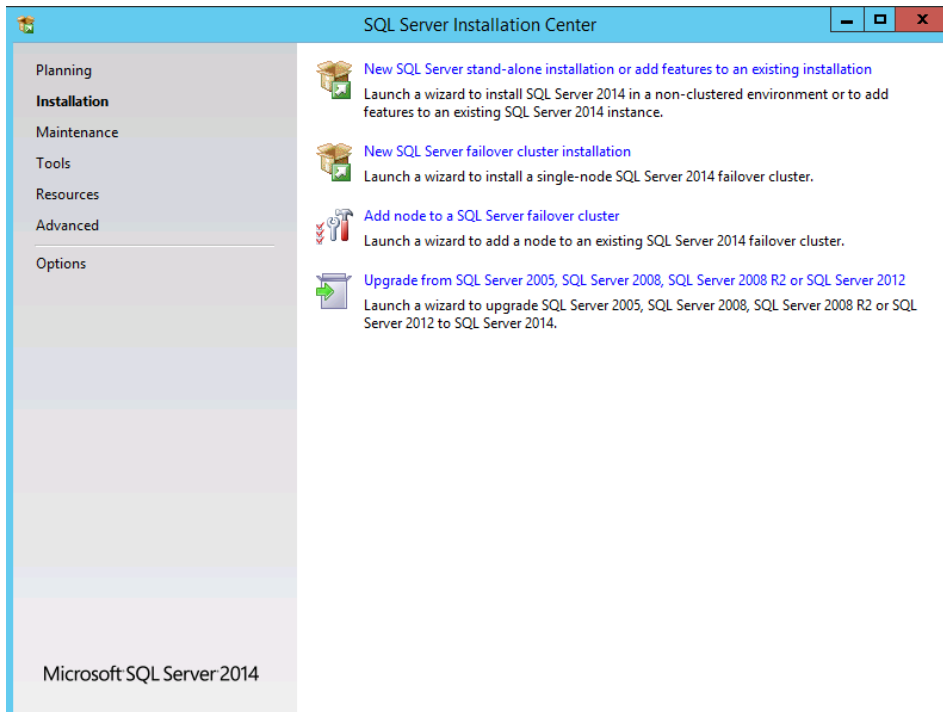


# Manual SQL Installation Steps

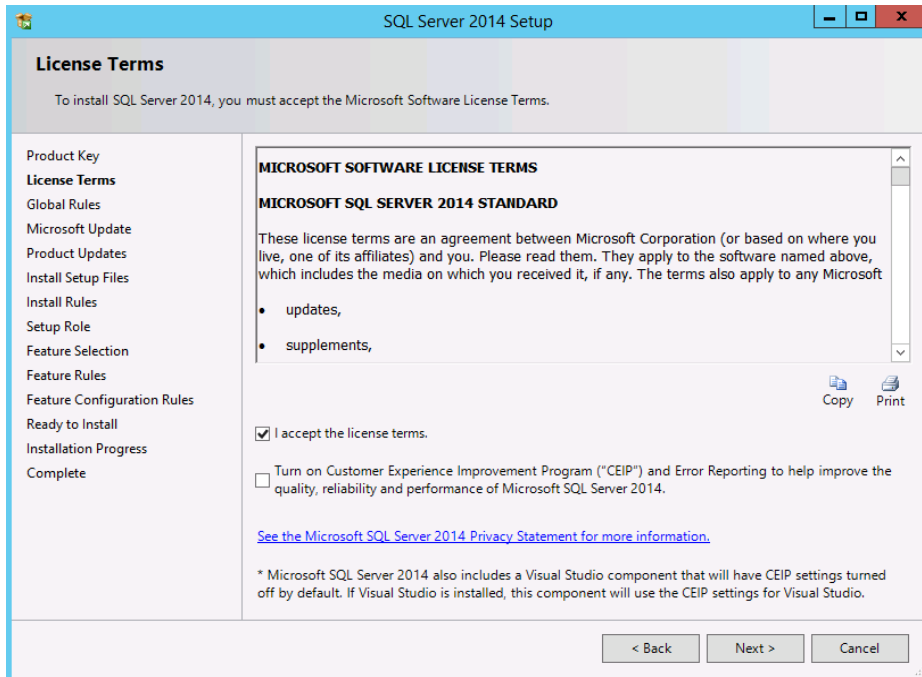
Run the setup.exe in the “Standard” folder on the disc



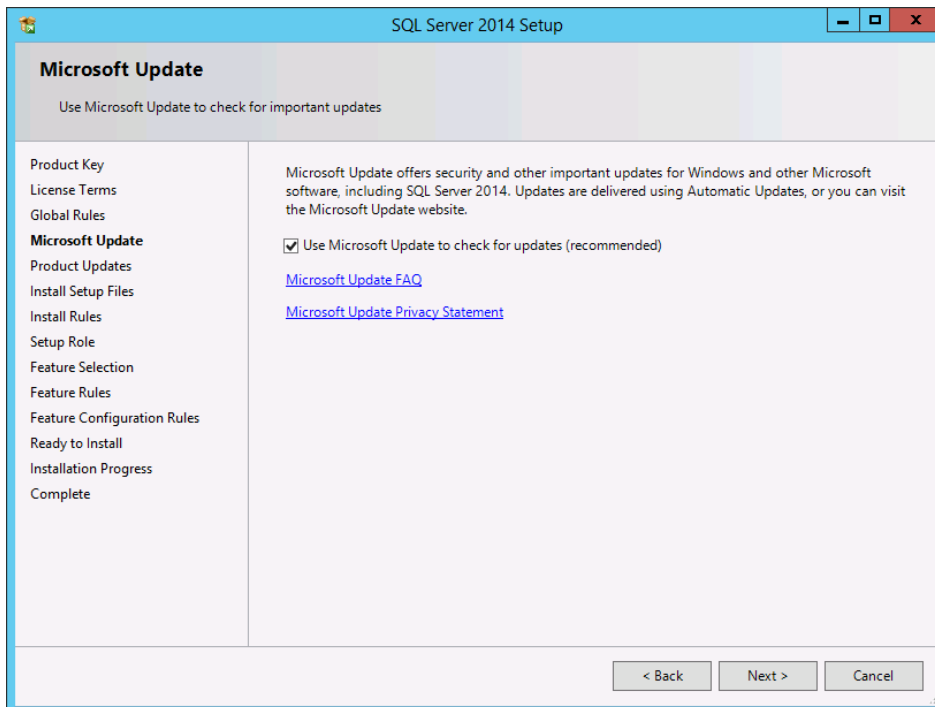
Under “Installation” in the left pane, select “New SQL Server stand-alone installation or add features to an existing installation”



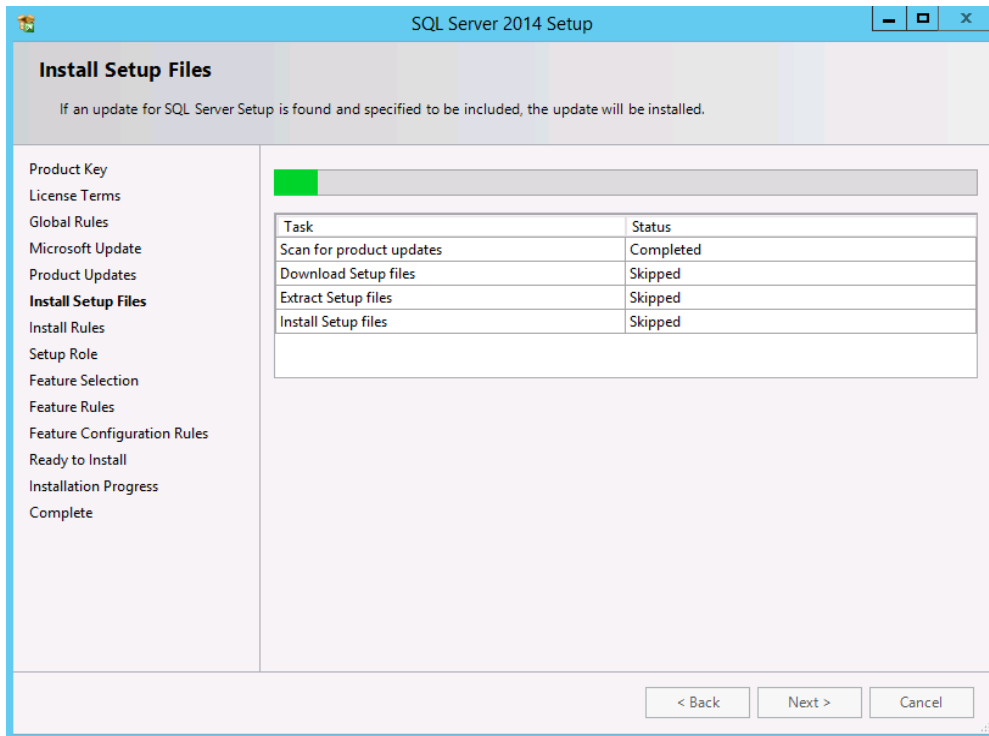
Click "Next" through the license terms and product key



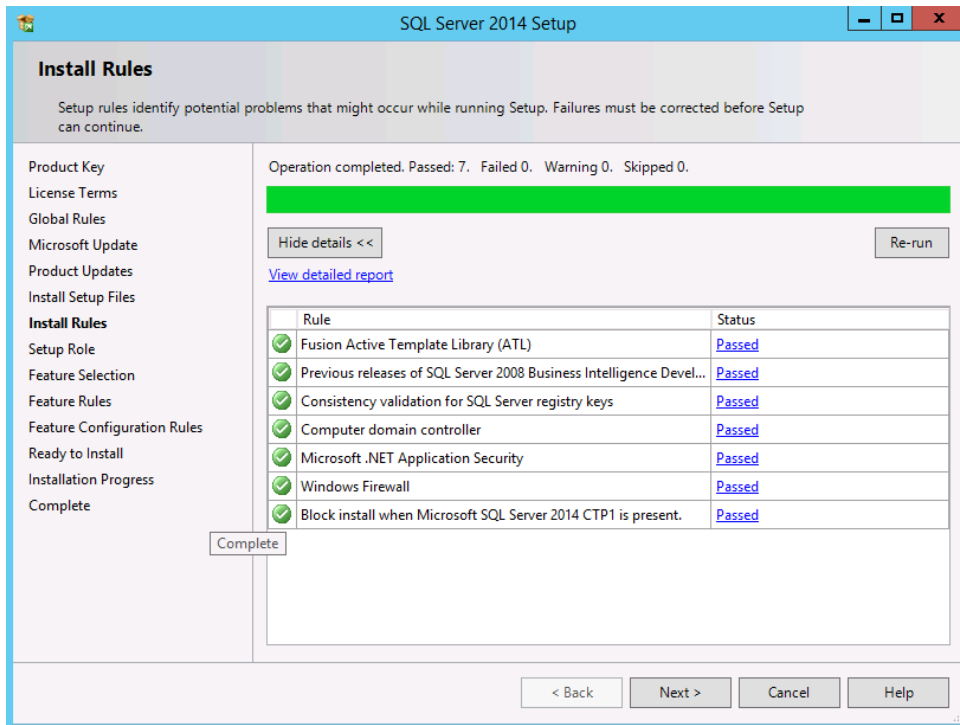
Check the box to update SQL



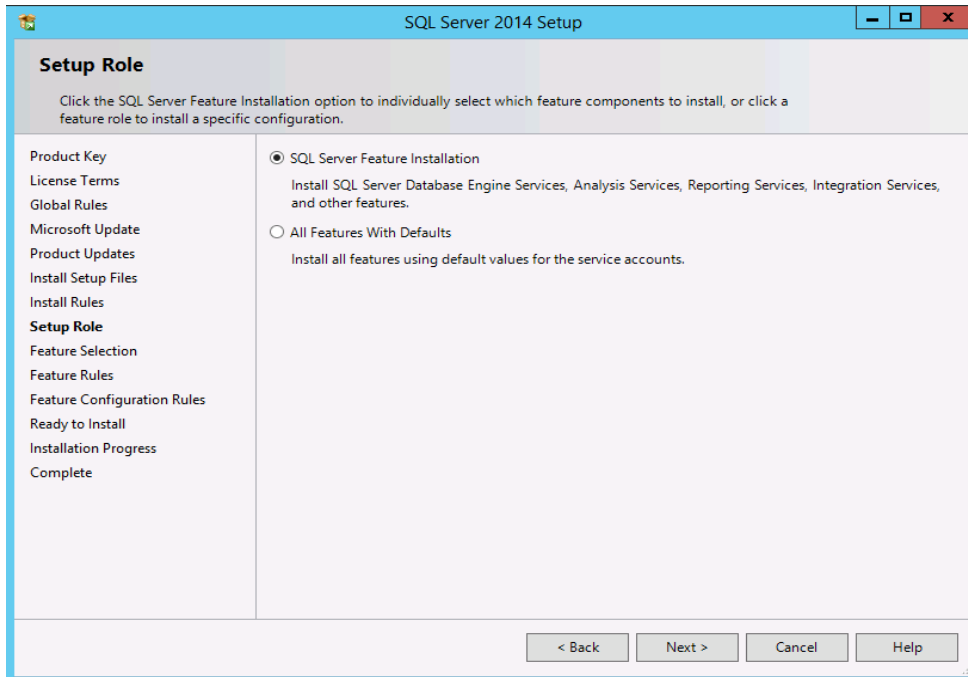
The product will begin to download updates, extract and install the setup files from the disc



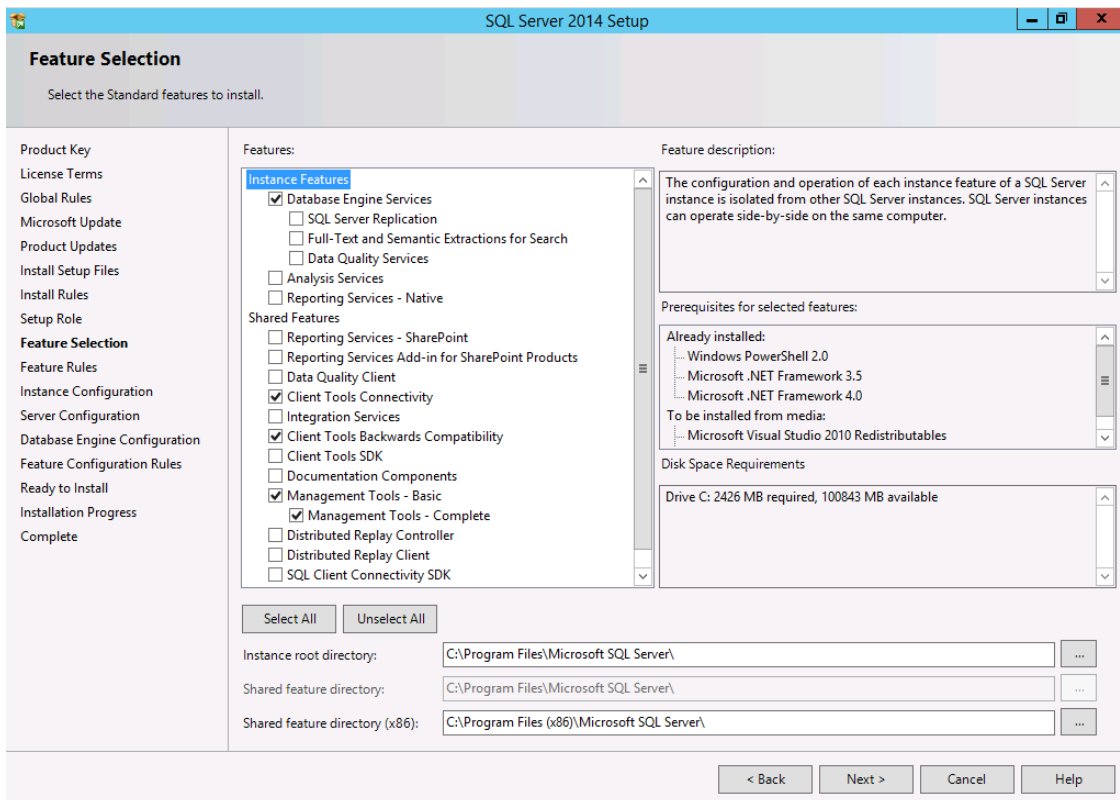
The setup will check to see if your system has the pre-requisites for installing SQL. If any of the conditions are not met, you will have to resolve them before proceeding. Additional information on resolving the problems are contained in the link in the status column



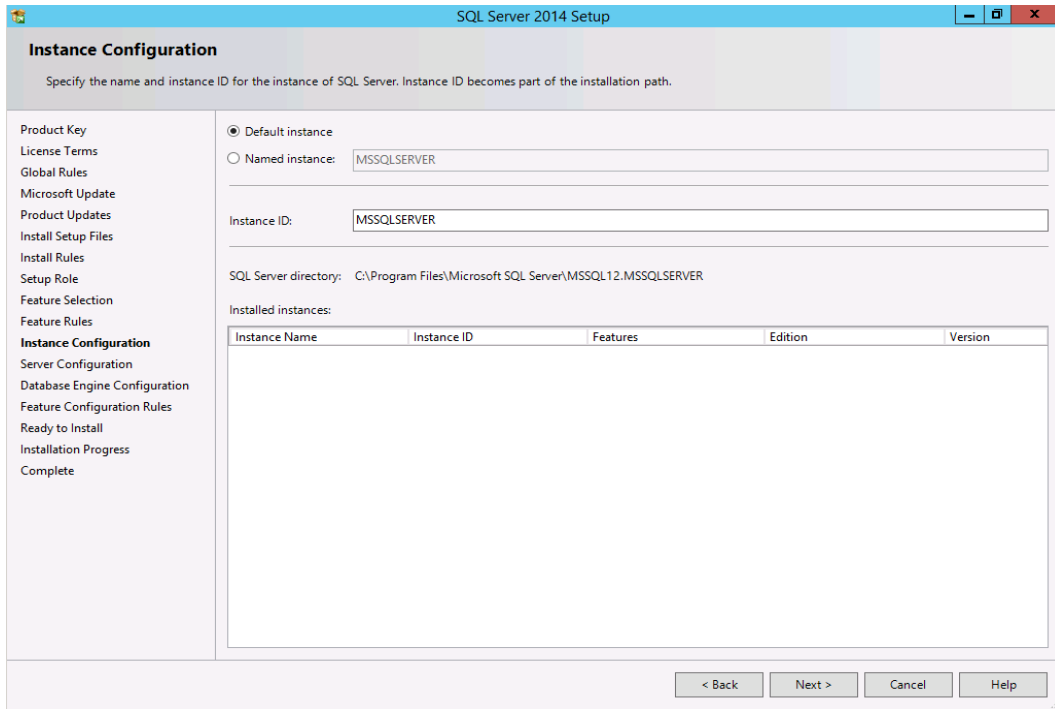
## Select "SQL Server Feature Installation"



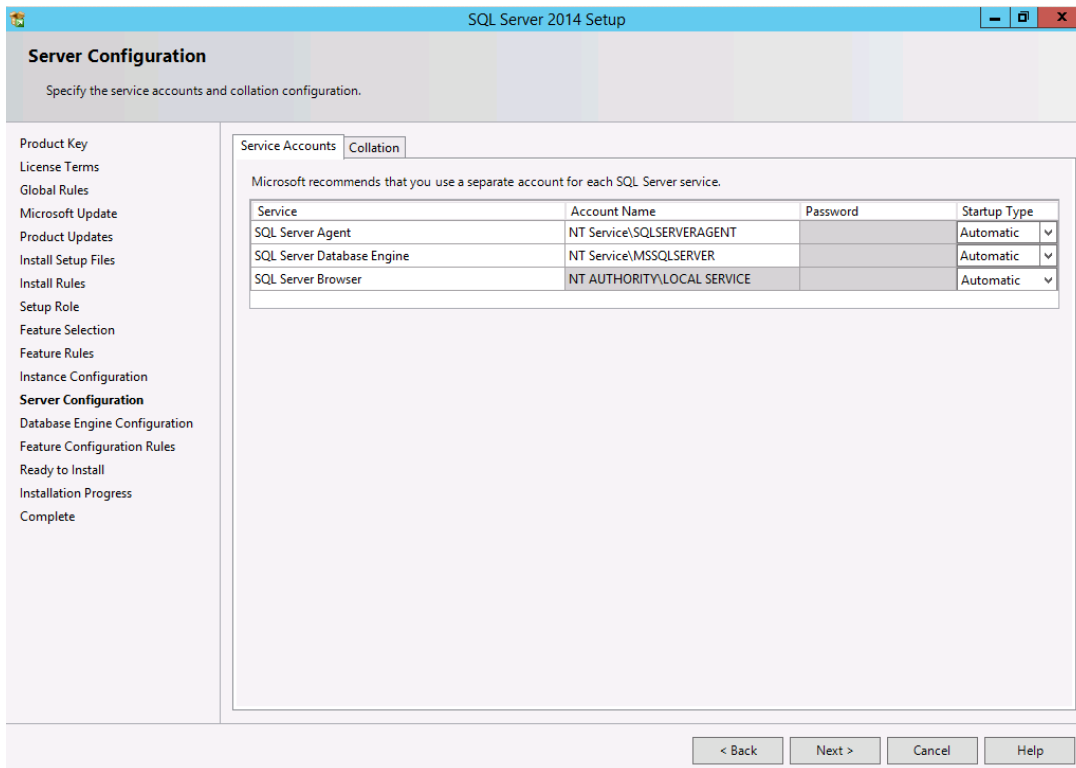
## Select the following 4 options before clicking next



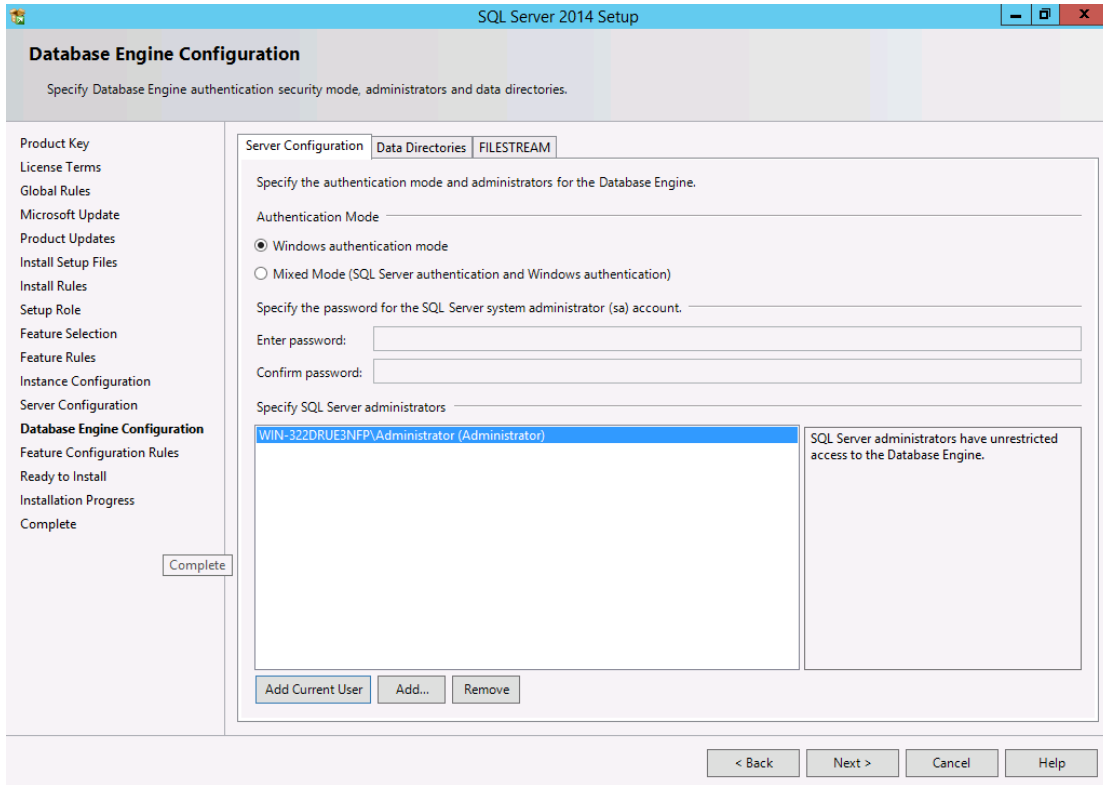
Keep the default instance if possible, else both ABELMed/ABELDent will support a named instance



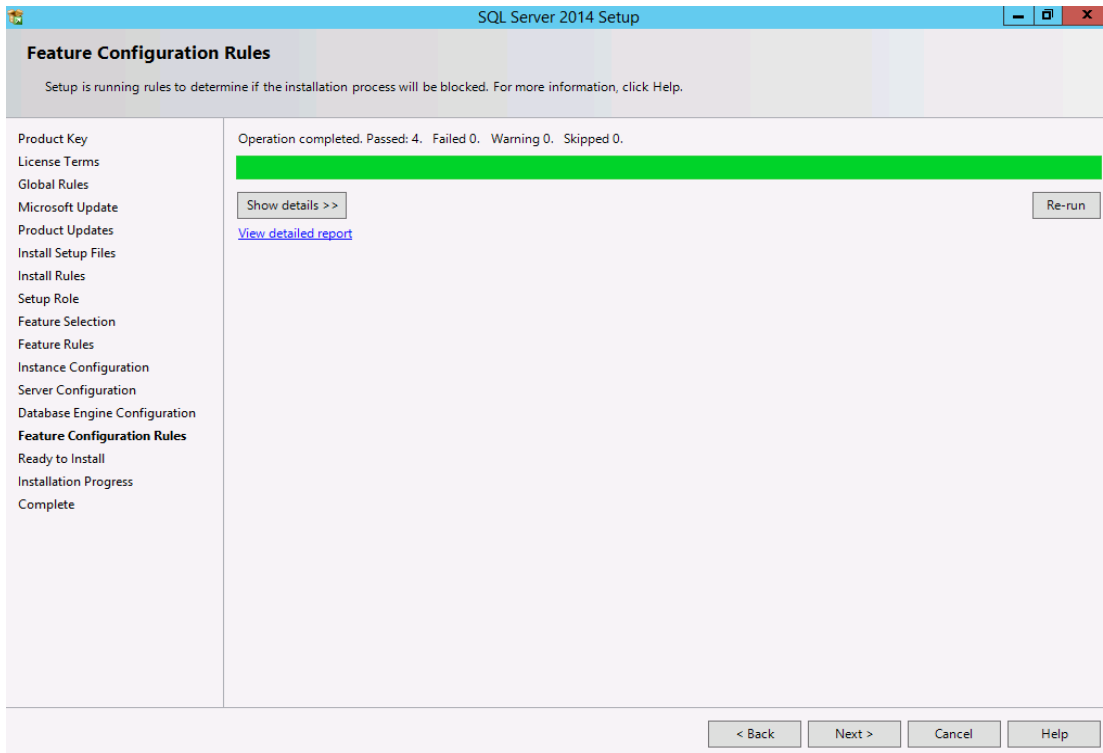
Change the startup type on the services to automatic



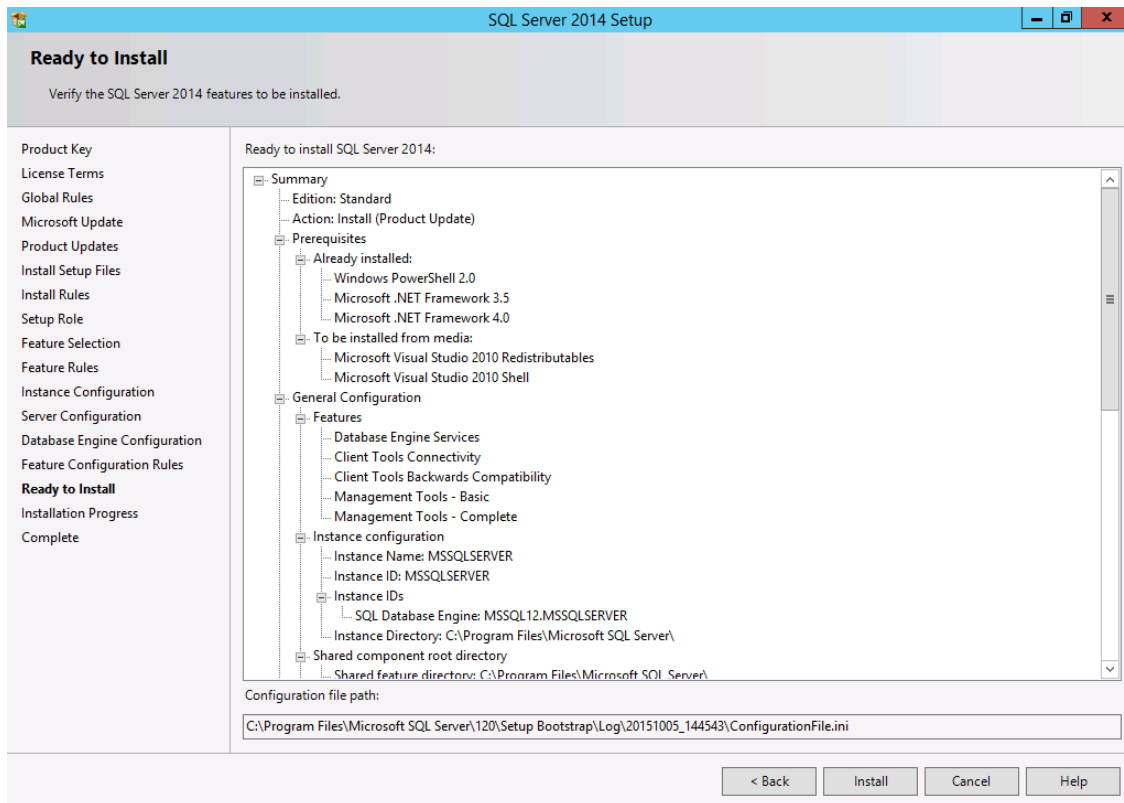
Click “Add Current User” to put the current account into the SQL Server Administrators group. Add any other accounts you want to have sysadmin SQL access.



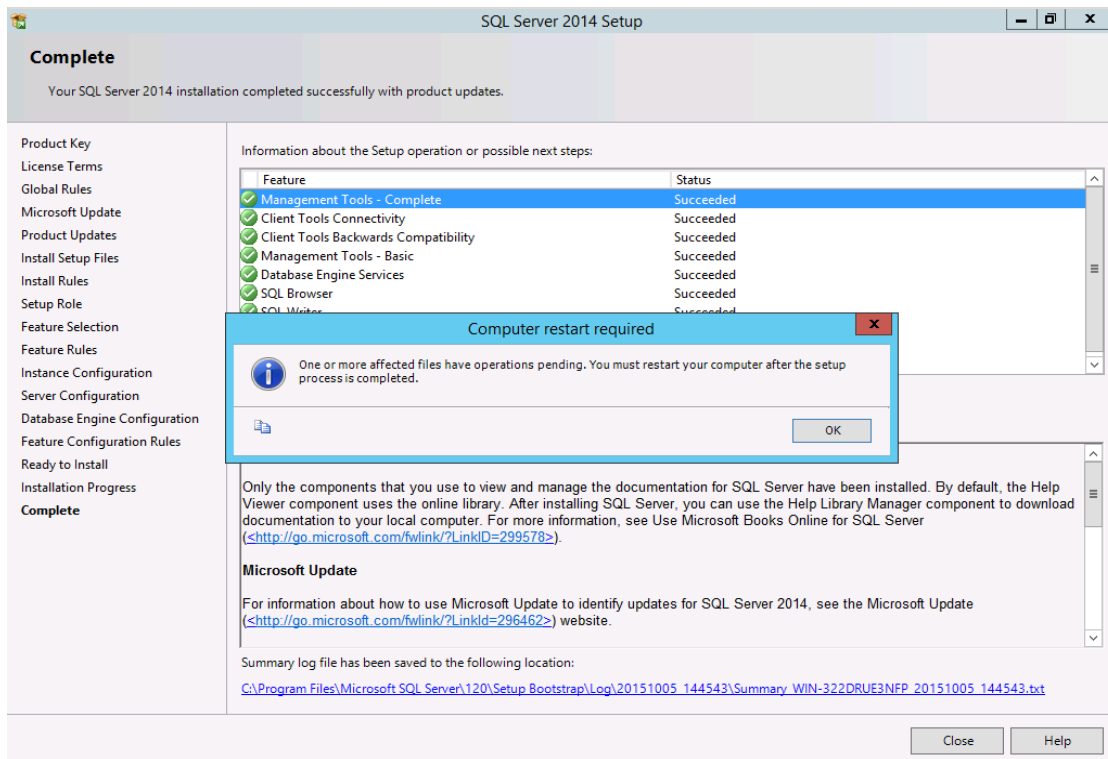
If all checks passed, click next



Click "Install"



Acknowledge and close the remaining dialogs when the install finishes, then reboot the machine



\*\*\*IMPORTANT\*\*\*

It is critical to review your backup process when making changes to your server. If you have replaced or updated your server, moved ABELDent to a new drive, or made any changes to existing data location please ensure your backup is updated to reflect the new location or changes.

If you subscribe to ABELDent RBS Remote Backup Service please email us at: RBS@ABELSoft.com or call us at: 800-267-ABEL (2235) ext 7 for RBS support. We will ensure your backups are modified to reflect the new location.